

Paul Serbest - 17. Semail
- 11 -

Antarm: Hicaz
1993 yılı Mezunları Anısına
(KORO İÇİN)

Sözi Süha Yıldırım
Gösteri: S. Gagrıhan
Erkan

Herbst

Handwritten musical notation for the word 'Herbst'. The notation is on a single staff with a treble clef. It begins with a G4 note, followed by a half note G4, a half note A4, a half note B4, a half note C5, a half note B4, a half note A4, a half note G4, and a half note F#4. Above the staff, there are three sets of lyrics: 'Herbst', 'Herbst', and 'Herbst'. The first set is aligned with the first two notes, the second set with the next two notes, and the third set with the final two notes. The notes are connected by a long, sweeping slur.

San ki bir serçe nin ka na din day di sev da mız

Aynılık vakti gönlü mü zü sarı an he ye can pp

[illegible]

Sin kor düstü ki dün den bu gū ne a cı ma siz

An la yin ne o ^{du}lu kelpi nin ò nù ^oso gùk so gùk so gùk ho cam

Saz _____ Aynılık vakiti bir yıla rek te

Handwritten musical notation for the first staff of 'The Rose Tree'. The staff is in treble clef with a key signature of one flat (B-flat). The melody begins with a quarter note G4, followed by a quarter note A4, a half note B-flat4, and a quarter note G4. A slur covers the next four notes: A4, B-flat4, C5, and B-flat4. The melody continues with a quarter note A4, a quarter note G4, a quarter note F4, and a quarter note E4. The staff ends with a double bar line.

bun ca can pp Bir kor düştü ki dün den bu ğu ne a cı ma sı z p

Handwritten musical notation on a single staff. The notation includes various note values (quarter, eighth, and sixteenth notes), rests, and a large slur spanning across several measures. The handwriting is fluid and characteristic of a personal sketch or a composer's draft.

An la yin ne o tur ka pi nin ò nǎ so ɔ̃uk so ɔ̃uk so ɔ̃uk ho cam

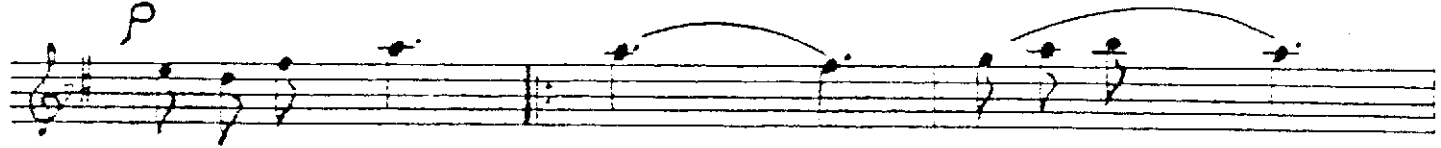
Handwritten musical notation for measures 184-186. The notation is on a single staff with a treble clef and a key signature of one sharp (F#). Measure 184 contains a quarter note G4, a quarter note A4, and a quarter note B4. Measure 185 contains a quarter note C5, a quarter note B4, and a quarter note A4. Measure 186 contains a quarter note G4, a quarter note F#4, and a quarter note E4. There are slurs over measures 184-185 and 185-186. The dynamic marking *mf* is written above measure 185, and *pp* is written above measure 186.

Hǔ zūn gū nà rún kāp rì sì yǐ mǐ

ne ca re Gûn ol du taş tı yû rek



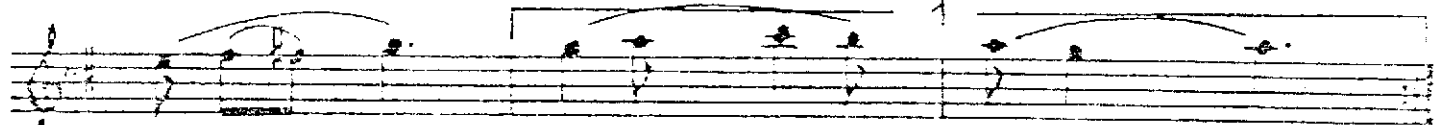
gün ol du a va re sa z



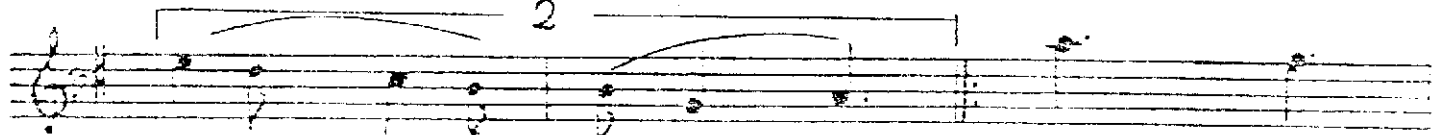
Gel dik gi di yo ruz



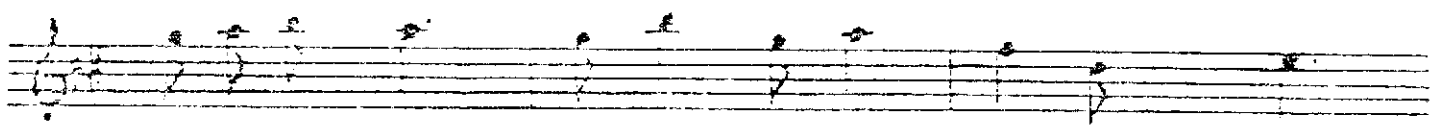
İ lim sa nat el e le Ay dın dı sun



ya rın lar yon sin hep bu me sa le



yon sin hep bu me sa le Aranağme



Ez gi der ken siz le re sev gi ler

Handwritten musical notation at the bottom of the page, including a treble clef, a key signature of one sharp, and a series of notes.

bı ra kı rız Gö nül gö zü y le gör dük he de fi
 el bet fe u la sı rız Söz
 p
 Gel dik gi di yo ruz
 i lîm sa nat el e le ay dın al sun
 ya rın lar yansın hep bu me sa le
 2
 yansın hep bu me şa le Gel dik
 gi di yo ruz Decresendo

İbrahim

5.5.1993

1. NOT: Bu eser Kara için bestelenmiştir.
2. NOT: "Sonki bir" sözleriyle başlayan ilk satırda önce Erkekler (1.E) okuyacak ve "Mi," notundaki puandanz yaparken, Kızlar (2.K) aynı ezgiyi tekrar edeceklerdir. Yine aynı uygulama, "serçenin", "kanadındaydı sevdemiz," sözleri ile ezgilendirilmiş kısım için de geçerlidir.